

North & South America version.

Inch size



HYDRO-LINE

Precision Hydraulic Expansion Toolholding System



HYDRO-LINE

Overview

- ① **HYDRO-MICRON** The standard. Various use. Optimal performance.
- ② **HYDRO-VS** Compact, very short type. For machine room space.
- ③ **HYDRO-SLIM** Slim and high-precision. Optimized interfering contours.
- ④ **HYDRO-ZERO EXTENSION** Zero run-out setting connection holder.
- ⑤ **HYDRO-GRIND** Tool Grinding and Sharpening.
- ⑥ **HYDRO-ACCESSORIES** Accessories for hydro-line.

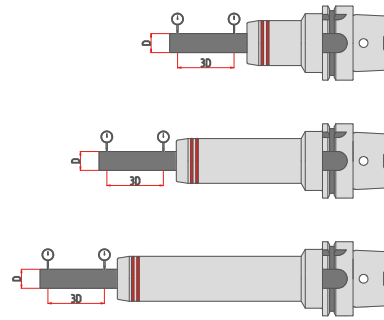


Quality Control



Precision and Run-out Guaranteed.

Standard run-out 3 μm .
 ID100(inch)/ ID125(inch) run-out 5 μm .
 Length 150mm or more run-out 7 μm .

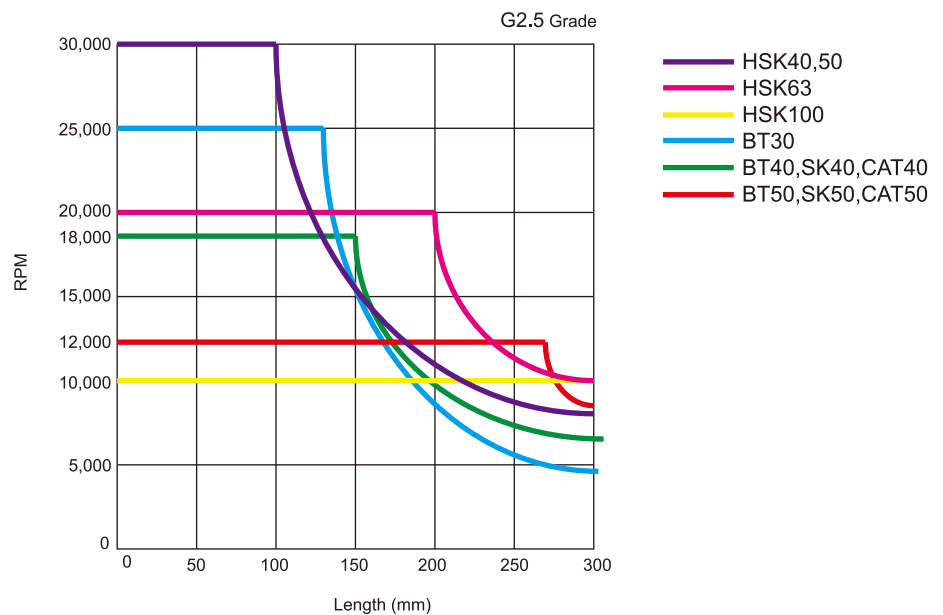


Taper contact is better than AT3.

Optimum connection between machine and tool.

All items Fine balancing.

All item G2.5 grade balancing quality.



Hydro-Line clamping force.

Ø6	16Nm	Ø16	185Nm
Ø8	23Nm	Ø18	280Nm
Ø10	45Nm	Ø20	430Nm
Ø12	95Nm	Ø25	650Nm
Ø14	110Nm	Ø32	900Nm

[Nm]



The standard. Various use. Optimal performance.

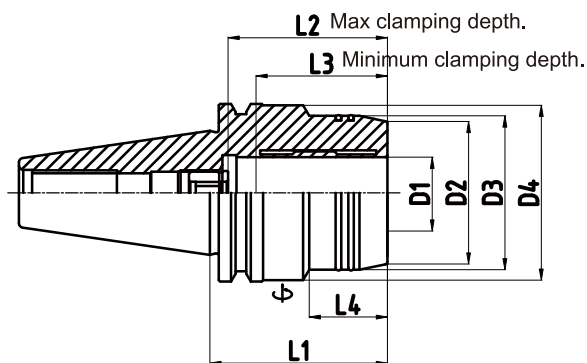
Inch size

= Dimensions(inch)

CAT40		D1	D2	D3	D4	L1	L2	L3	L4	Clamping wrench	Adjustment bolt (wrench)	Kg.
CAT40/GMR025/0254	●	0.250	1.024	1.752	-	2.539	1.476	1.083	1.750	TR-4.0	M5x0.8(T-2.5)	1.3
CAT40/GMR037/0250	●	0.375	1.075	1.575	-	2.500	1.673	1.280	1.789	TR-4.0	M8x1.0(T-4.0)	1.3
CAT40/GMR050/0254	●	0.500	1.260	1.654	-	2.539	1.811	1.417	1.750	TR-4.0	M8x1.0(T-4.0)	1.3
CAT40/GMR062/0250	●	0.625	1.362	1.752	-	2.500	2.067	1.673	1.789	TR-4.0	M12x1.0(T-6.0)	1.3
CAT40/GMR075/0254	●	0.750	1.496	1.939	-	2.539	2.008	1.614	1.750	TR-5.0	M8x1.0(T-4.0)	1.4
CAT40/GMR100/0250	●	1.000	2.008	2.165	2.461	2.500	2.244	1.850	1.102	TR-5.0	M16x1.0(T-6.0)	1.5

CAT40												
CAT40/GMR025/0400	●	0.250	0.906	1.024	1.750	4.000	1.476	1.083	1.280	TR-4.0	M6x0.8(T-2.5)	1.5
CAT40/GMR037/0400	●	0.375	1.063	1.181	1.750	4.000	1.673	1.280	1.634	TR-4.0	M6x1.0(T-3.0)	1.5
CAT40/GMR050/0400	●	0.500	1.142	1.260	1.750	4.000	1.870	1.476	1.634	TR-4.0	M10x1.0(T-5.0)	1.5
CAT40/GMR062/0400	●	0.625	1.378	1.496	1.750	4.000	2.067	1.673	1.949	TR-4.0	M10x1.0(T-5.0)	1.5
CAT40/GMR075/0400	●	0.750	1.535	1.654	1.750	4.000	2.067	1.673	1.949	TR-5.0	M10x1.0(T-5.0)	1.6
CAT40/GMR100/0400	●	1.000	2.008	2.165	2.461	4.000	2.402	2.008	2.618	TR-5.0	M16x1.0(T-6.0)	2.1
CAT40/GMR125/0400	●	1.250	2.283	2.441	-	4.000	2.402	2.008	3.250	TR-5.0	M16x1.0(T-6.0)	2.3

Availability: ● Stock ▲ Short lead time ○ Made to order



CAT40

mm size

≡ Dimensions(mm)

CAT40		D1	D2	D3	D4	L1	L2	L3	L4	Clamping wrench	Adjustment bolt (wrench)	Kg.
CAT40/GMR12/80.5	●	12	29	32	44.45	80.5	47.5	37.5	44	TR-4.0	M10x1.0(T-5.0)	1.2
CAT40/GMR20/80.5	●	20	39	41	50	80.5	52.5	42.5	44	TR-5.0	M16x1.0(T-6.0)	1.3
CAT40/GMR32/80.5	●	32	58	62	80	80.5	65	55	26	TR-5.0	M16x1.0(T-6.0)	1.8

Availability: ● Stock ▲ Short lead time ○ Made to order

- »h6 shank tools must be used.
- »Tool length can be adjusted up to 10mm.
- »T-wrench is must be ordered separately.
(GRIP torque wrench is recommended.)
- »All products center through coolant system.
- »Additional sizes and special designs available on request.
- ⚠ The minimum tool depth must be observed.

The standard. Various use. Optimal performance.

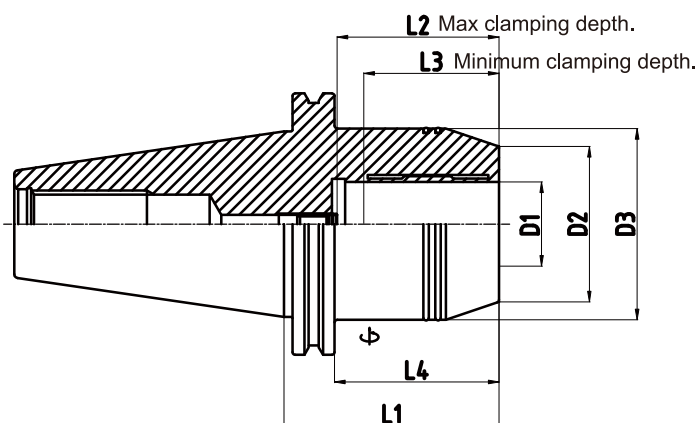
Inch size

≡ Dimensions(inch)

CAT50		D1	D2	D3	D4	L1	L2	L3	L4	Clamping wrench	Adjustment bolt (wrench)	Kg.
CAT50/GMR025/0319	●	0.250	0.906	1.024	1.750	3.189	1.476	1.083	1.260	TR-4.0	M5x0.8(T-2.5)	3.1
CAT50/GMR037/0319	●	0.375	1.063	1.181	1.750	3.189	1.673	1.280	1.390	TR-4.0	M6x1.0(T-3.0)	3.1
CAT50/GMR050/0319	●	0.500	1.142	1.260	1.750	3.189	1.870	1.476	1.390	TR-4.0	M10x1.0(T-5.0)	3.1
CAT50/GMR062/0319	●	0.625	1.378	1.496	1.929	3.189	2.067	1.673	1.299	TR-4.0	M10x1.0(T-5.0)	3.2
CAT50/GMR075/0319	●	0.750	1.496	1.939	-	3.189	2.067	1.673	2.439	TR-5.0	M8x1.0(T-4.0)	3.3
CAT50/GMR100/0319	●	1.000	2.008	2.165	2.500	3.189	2.402	2.008	1.634	TR-5.0	M16x1.0(T-6.0)	3.3
CAT50/GMR125/0319	●	1.250	2.303	2.835	-	3.189	2.402	2.008	2.439	TR-5.0	M8x1.0(T-4.0)	4.2

CAT50		D1	D2	D3	D4	L1	L2	L3	L4	Clamping wrench	Adjustment bolt (wrench)	Kg.
CAT50/GMR025/0600	●	0.250	0.906	1.024	2.752	6.000	1.476	1.083	1.280	TR-4.0	M5x0.8(T-2.5)	4.5
CAT50/GMR037/0600	●	0.375	1.063	1.181	2.752	6.000	1.673	1.280	1.437	TR-4.0	M6x1.0(T-3.0)	4.5
CAT50/GMR050/0600	●	0.500	1.142	1.260	2.752	6.000	1.870	1.476	1.634	TR-4.0	M10x1.0(T-5.0)	4.5
CAT50/GMR062/0600	●	0.625	1.378	1.496	2.752	6.000	2.067	1.673	1.870	TR-4.0	M10x1.0(T-5.0)	4.5
CAT50/GMR075/0600	●	0.750	1.535	1.654	2.752	6.000	2.067	1.673	1.949	TR-5.0	M10x1.0(T-5.0)	4.5
CAT50/GMR100/0600	●	1.000	2.087	2.244	2.752	6.000	2.402	2.008	1.949	TR-5.0	M16x1.0(T-6.0)	5.4
CAT50/GMR125/0600	●	1.250	2.362	2.520	2.752	6.000	2.402	2.008	4.508	TR-5.0	M16x1.0(T-6.0)	5.5

Availability: ● Stock ▲ Short lead time ○ Made to order



CAT50

mm size

Dimensions(mm)

CAT50		D1	D2	D3	D4	L1	L2	L3	L4	Clamping wrench	Adjustment bolt (wrench)	Kg.
CAT50/GMR12/81	●	12	29	32	44.45	81	47.5	37.5	35.5	TR-4.0	M10x1.0(T-5.0)	3.1
CAT50/GMR20/81	●	20	39	42	50	81	52.5	42.5	45	TR-5.0	M16x1.0(T-6.0)	3.1
CAT50/GMR32/81	●	32	58.5	72	-	81	65	55	61.95	TR-5.0	M8x1.0(T-4.0)	4.2

CAT50													
CAT50		D1	D2	D3	D4	L1	L2	L3	L4	Clamping wrench	Adjustment bolt (wrench)	Kg.	
CAT50/GMR12/152.4	●	12	29	32	50.25	69.9	152.4	47.5	37.5	41.5	TR-4.0	M10x1.0(T-5.0)	4.5
CAT50/GMR20/152.4	●	20	39	42	50.25	69.9	152.4	52.5	42.5	49.5	TR-5.0	M16x1.0(T-6.0)	4.5
CAT50/GMR32/152.4	●	32	60	64	69.9	-	152.4	65	55	114.5	TR-5.0	M16x1.0(T-6.0)	5.5

Availability: ● Stock ▲ Short lead time ○ Made to order

- »h6 shank tools must be used.
- »Tool length can be adjusted up to 10mm.
- »T-wrench is must be ordered separately.
(GRIP torque wrench is recommended.)
- »All products center through coolant system.
- »Additional sizes and special designs available on request.
- ⚠ The minimum tool depth must be observed.

The standard. Various use. Optimal performance.

Inch size**Dimensions(inch)**

HSK-A40		D1	D2	D3	D4	L1	L2	L3	L4	Clamping wrench	Adjustment bolt (wrench)	Kg.
HSK-A40/GMR050/0315	○	0.500	1.142	1.260	1.319	3.150	1.870	1.476	1.890	TR-4.0	M6x1.0(T-3.0)	0.6

HSK-A50

HSK-A50/GMR050/0335	○	0.500	1.220	1.339	1.575	3.346	1.870	1.476	1.693	TR-4.0	M6x1.0(T-3.0)	0.8
HSK-A50/GMR075/0354	○	0.750	1.535	1.634	-	3.543	2.067	1.673	2.520	TR-4.0	M6x1.0(T-3.0)	0.9

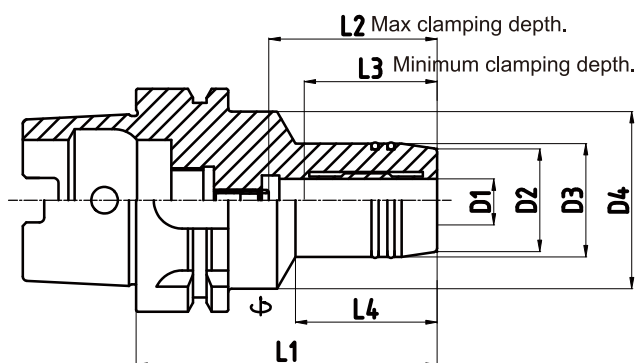
HSK-A63

HSK-A63/GMR025/0275	●	0.250	0.906	1.024	1.969	2.756	1.476	1.083	0.945	TR-4.0	M5x0.8(T-2.5)	1.0
HSK-A63/GMR037/0315	●	0.370	1.063	1.181	1.969	3.150	1.673	1.280	1.378	TR-4.0	M6x1.0(T-3.0)	1.1
HSK-A63/GMR050/0315	●	0.500	1.260	1.654	2.067	3.150	1.811	1.417	1.339	TR-4.0	M8x1.0(T-4.0)	1.3
HSK-A63/GMR075/0315	●	0.750	1.496	2.067	-	3.150	2.008	1.614	2.126	TR-5.0	M8x1.0(T-4.0)	1.4
HSK-A63/GMR100/0472	●	1.000	1.929	2.067	-	4.724	2.402	2.008	3.701	TR-5.0	M16x1.0(T-6.0)	1.9
HSK-A63/GMR125/0492	●	1.250	2.362	2.520	-	4.921	2.402	2.008	3.898	TR-5.0	M16x1.0(T-6.0)	2.4

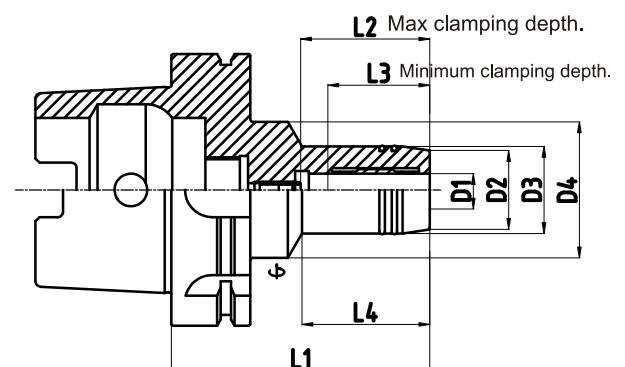
HSK-A100

HSK-A100/GMR050/0374	●	0.500	1.142	1.260	1.969	3.740	1.870	1.476	1.850	TR-4.0	M10x1.0(T-5.0)	2.8
HSK-A100/GMR075/0413	●	0.750	1.535	1.654	1.969	4.134	2.067	1.673	2.283	TR-5.0	M16x1.0(T-6.0)	3.0
HSK-A100/GMR125/0433	●	1.250	2.362	2.520	2.953	4.331	2.402	2.008	2.441	TR-5.0	M12x1.0(T-6.0)	4.7

Availability: ● Stock ▲ Short lead time ○ Made to order



HSK-A40/A50/A63



HSK-A100

inch size

Long type

Dimensions(inch)

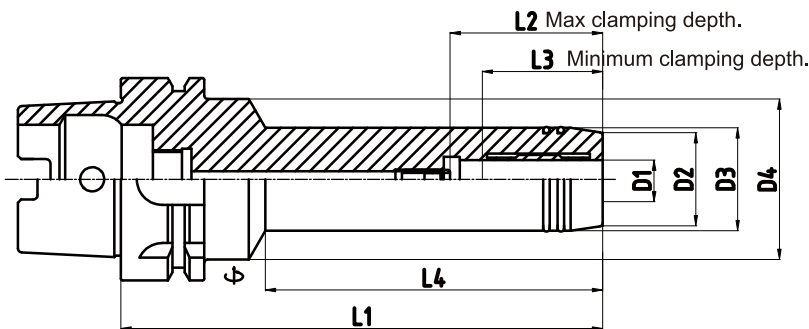
HSK-A63		D1	D2	D3	D4	L1	L2	L3	L4	Clamping wrench	Adjustment bolt (wrench)	Kg.
HSK-A63/GMR025/0590	●	0.250	0.906	1.024	1.969	5.906	1.476	1.083	4.055	TR-4.0	M5x0.8(T-2.5)	1.4
HSK-A63/GMR037/0590	●	0.370	1.063	1.181	1.969	5.906	1.673	1.280	4.094	TR-4.0	M8x1.0(T-4.0)	1.6
HSK-A63/GMR050/0590	●	0.500	1.142	1.260	1.969	5.906	1.870	1.476	4.134	TR-4.0	M10x1.0(T-5.0)	1.7
HSK-A63/GMR075/0590	●	0.750	1.535	1.654	1.969	5.906	2.064	1.673	4.252	TR-5.0	M16x1.0(T-6.0)	2.0

HSK-A100		D1	D2	D3	D4	L1	L2	L3	L4	Clamping wrench	Adjustment bolt (wrench)	Kg.
HSK-A100/GMR050/0630	●	0.250	1.142	1.260	1.969	0.630	1.870	1.476	4.134	TR-4.0	M10x1.0(T-5.0)	3.2
HSK-A100/GMR075/0630	●	0.750	1.535	1.654	1.969	0.630	2.067	1.673	4.252	TR-5.0	M16x1.0(T-6.0)	3.6
HSK-A100/GMR125/0630	●	1.250	2.283	2.441	2.953	0.630	2.402	2.008	3.250	TR-5.0	M16x1.0(T-6.0)	5.0

Availability: ● Stock ▲ Short lead time ○ Made to order

- »h6 shank tools must be used.
- »Tool length can be adjusted up to 10mm.
- »T-wrench is must be ordered separately. (GRIP torque wrench is recommended.)
- »Data carrier and Coolant tube as an option.
- »All products center through coolant system.
- »Additional sizes and special designs available on request.

⚠ The minimum tool depth must be observed.



HSK-A63/A100

The standard. Various use. Optimal performance.

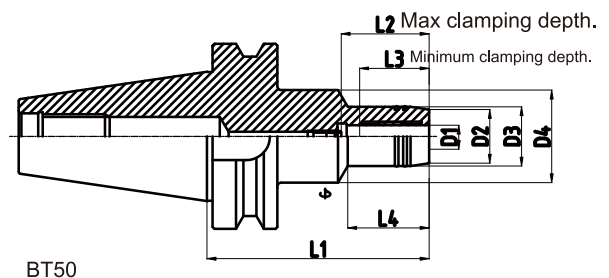
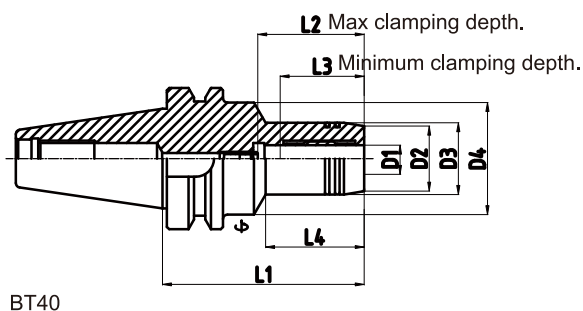
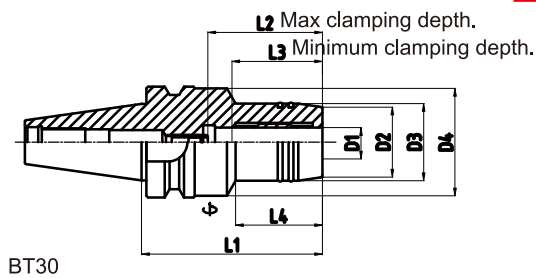
Inch size

= Dimensions(inch)

BT30		D1	D2	D3	D4	L1	L2	L3	L4	Clamping wrench	Adjustment bolt (wrench)	Kg.
BT30/GMR075/0354	●	0.750	1.535	1.654	1.752	3.543	2.067	1.673	1.969	TR-4.0	M10x1.0(T-5.0)	1.0
BT40		D1	D2	D3	D4	L1	L2	L3	L4	Clamping wrench	Adjustment bolt (wrench)	Kg.
BT40/GMR050/0354	●	0.500	1.142	1.260	1.969	3.543	1.870	1.476	1.752	TR-4.0	M10x1.0(T-5.0)	1.5
BT40/GMR075/0354	●	0.750	1.535	1.654	1.969	3.543	2.067	1.673	1.870	TR-5.0	M10x1.0(T-5.0)	1.6
BT40/GMR125/0413	●	1.250	2.283	2.441	-	4.134	2.402	2.008	3.071	TR-5.0	M16x1.0(T-6.0)	2.2
BT50		D1	D2	D3	D4	L1	L2	L3	L4	Clamping wrench	Adjustment bolt (wrench)	Kg.
BT50/GMR050/0354	●	0.500	1.142	1.260	1.969	3.740	1.870	1.476	1.850	TR-4.0	M5x0.8(T-2.5)	1.0
BT50/GMR075/0354	●	0.750	1.535	1.654	1.969	4.134	2.067	1.673	2.283	TR-4.0	M6x1.0(T-3.0)	1.0
BT50/GMR125/0452	●	1.250	2.362	2.520	2.953	4.331	2.402	2.008	2.441	TR-4.0	M8x1.0(T-4.0)	1.1

Availability: ● Stock ▲ Short lead time ○ Made to order

- »h6 shank tools must be used.
 - »Tool length can be adjusted up to 10mm.
 - »T-wrench is must be ordered separately.
(GRIP torque wrench is recommended.)
 - »All products center through coolant system.
 - »Additional sizes and special designs available on request.
- ⚠ The minimum tool depth must be observed.



Compact, very short type. For machine room space.

inch size

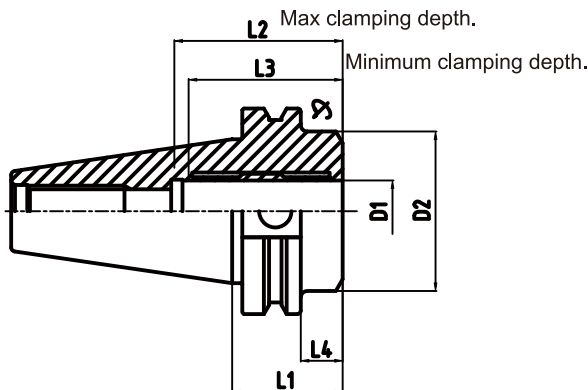
Dimensions(inch)

CAT40		D1	D2	D3	D4	L1	L2	L3	L4	Clamping wrench	Adjustment bolt (wrench)	Kg.
	CAT40/GVS075/0126	● 0.750	1.969	-	-	1.260	2.028	1.634	0.508	TR-4.0	-	0.9
CAT50												
	CAT50/GVS125/0126	● 1.250	2.776	-	-	1.260	2.559	2.165	0.508	TR-5.0	-	2.9

Availability: ● Stock ▲ Short lead time ○ Made to order

- »h6 shank tools must be used.
- »Tool length can be adjusted up to 10mm.
- »T-wrench is must be ordered separately. (GRIP torque wrench is recommended.)
- »All products center through coolant system.
- »Additional sizes and special designs available on request.

⚠ The minimum tool depth must be observed.



CAT40/CAT50



Slim and high-precision. Optimized interfering contours.

Inch size

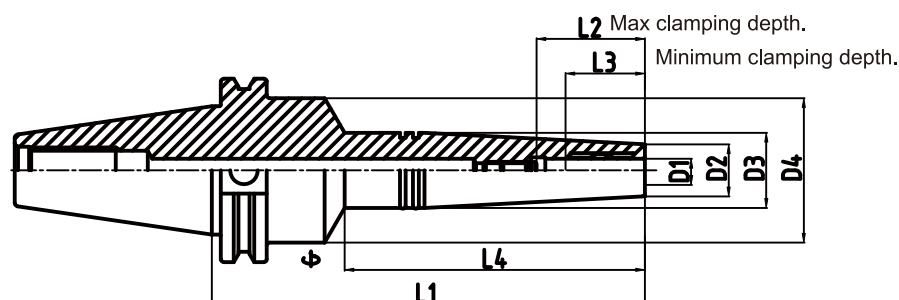
Dimensions(mm)

CAT40		D1	D2	D3	D4	L1	L2	L3	L4	Clamping wrench	Adjustment bolt (wrench)	Kg.
CAT40/GSL025/0590	●	0.250	0.630	0.945	1.732	5.906	1.476	1.083	4.055	TR-4.0	M5x0.8(T-2.5)	1.4
CAT40/GSL037/0590	●	0.370	0.787	1.102	1.732	5.906	1.673	1.280	4.094	TR-4.0	M8x1.0(T-4.0)	1.5
CAT40/GSL050/0590	●	0.500	0.906	1.181	1.732	5.906	1.870	1.476	4.134	TR-4.0	M10x1.0(T-5.0)	1.5
CAT40/GSL062/0590	●	0.620	1.024	1.339	1.732	5.906	2.067	1.673	4.134	TR-4.0	M12x1.0(T-6.0)	1.7
CAT40/GSL075/0590	●	0.750	1.181	1.496	1.732	5.906	2.067	1.673	4.252	TR-4.0	M16x1.0(T-6.0)	1.9

CAT50		D1	D2	D3	D4	L1	L2	L3	L4	Clamping wrench	Adjustment bolt (wrench)	Kg.
CAT50/GSL025/0784	▲	0.250	0.630	0.945	1.969	7.874	1.476	1.083	4.724	TR-4.0	M5x0.8(T-2.5)	3.9
CAT50/GSL037/0784	▲	0.370	0.787	1.102	1.969	7.874	1.673	1.280	4.724	TR-4.0	M8x1.0(T-3.0)	3.9
CAT50/GSL050/0784	▲	0.500	0.906	1.181	1.969	7.874	1.870	1.476	4.724	TR-4.0	M10x1.0(T-5.0)	4.0
CAT50/GSL062/0784	▲	0.620	1.024	1.339	1.969	7.874	2.067	1.673	4.764	TR-4.0	M12x1.0(T-6.0)	4.1
CAT50/GSL075/0784	▲	0.750	1.181	1.496	1.969	7.874	2.067	1.673	4.803	TR-4.0	M16x1.0(T-6.0)	4.2

Availability: ● Stock ▲ Short lead time ○ Made to order

- »h6 shank tools must be used.
- »Tool length can be adjusted up to 10mm.
- »T-wrench is must be ordered separately.
(GRIP torque wrench is recommended.)
- »All products center through coolant system.
- »Additional sizes and special designs available on request.
- ⚠ The minimum tool depth must be observed.



CAT40/CAT50

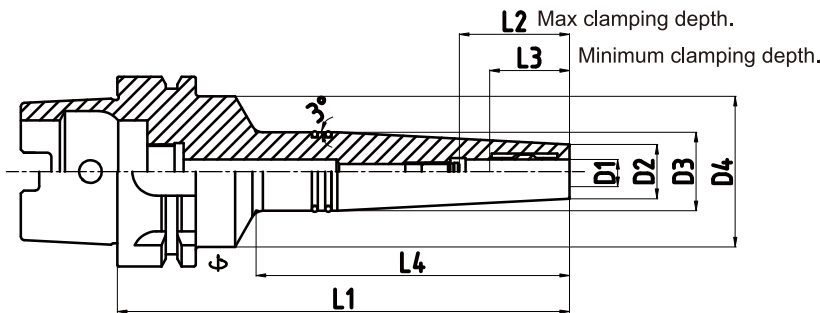
≡ Dimensions(mm)

HSK-A63		D1	D2	D3	D4	L1	L2	L3	L4	Clamping wrench	Adjustment bolt (wrench)	Kg.
HSK-A63/GSL025/0590	●	0.250	0.630	0.945	1.969	5.906	1.476	1.083	4.055	TR-4.0	M5x0.8(T-2.5)	1.2
HSK-A63/GSL037/0590	●	0.370	0.787	1.102	1.969	5.906	1.673	1.280	4.094	TR-4.0	M8x1.0(T-4.0)	1.2
HSK-A63/GSL050/0590	●	0.500	0.906	1.181	1.969	5.906	1.870	1.476	4.134	TR-4.0	M10x1.0(T-5.0)	1.4
HSK-A63/GSL062/0590	●	0.620	1.024	1.339	1.969	5.906	2.067	1.673	4.173	TR-4.0	M12x1.0(T-6.0)	1.5
HSK-A63/GSL075/0590	●	0.750	1.181	1.496	1.969	5.906	2.067	1.673	4.252	TR-4.0	M16x1.0(T-6.0)	1.6

Availability: ● Stock ▲ Short lead time ○ Made to order

- »h6 shank tools must be used.
- »Tool length can be adjusted up to 10mm.
- »T-wrench is must be ordered separately. (GRIP torque wrench is recommended.)
- »Data carrier and Coolant tube as an option.
- »All products center through coolant system.
- »Additional sizes and special designs available on request.

⚠ The minimum tool depth must be observed.



HSK-A50/A63

HYDRO-ZERO EXTENSION

ST | Cylindrical

Zero run-out setting connection holder.

Inch size

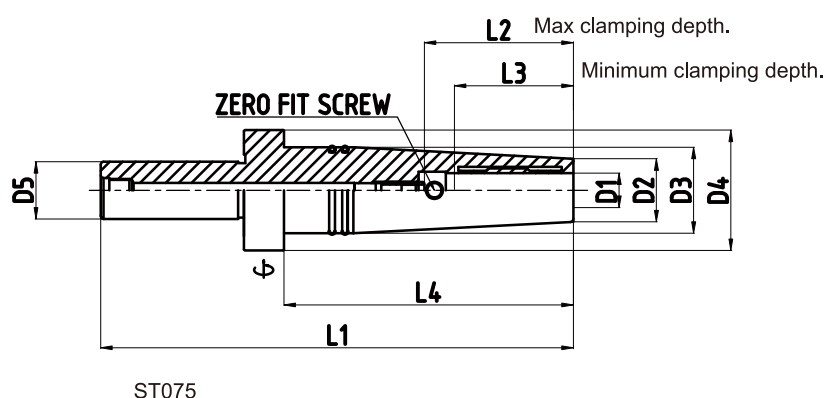
Dimensions(inch)

ST075	D1	D2	D3	D4	D5	L1	L2	L3	L4	Clamping wrench	Adjustment bolt (wrench)	Kg.
ST075/ZEX025/0649 ●	0.250	0.630	0.945	1.654	0.750	6.496	1.614	1.220	3.976	TR-4.0	M5x0.8(T-2.5)	0.5
ST075/ZEX037/0649 ●	0.375	0.787	1.102	1.654	0.750	6.496	1.890	1.496	3.976	TR-4.0	M6x1.0(T-3.0)	0.6
ST075/ZEX050/0649 ●	0.500	0.906	1.181	1.654	0.750	6.496	2.087	1.693	3.976	TR-4.0	M10x1.0(T-5.0)	0.6
ST075/ZEX062/0649 ●	0.625	1.024	1.102	1.654	0.750	6.496	2.283	1.890	3.976	TR-4.0	M12x1.0(T-6.0)	0.6
ST075/ZEX075/0649 ●	0.750	1.161	1.240	1.654	0.750	6.496	2.283	1.890	3.976	TR-5.0	M16x1.0(T-6.0)	0.7
ST075/ZEX075/0846 ●	1.000	1.161	1.240	1.654	0.750	8.465	2.283	1.890	5.945	TR-5.0	M16x1.0(T-6.0)	1.0

Availability: ● Stock ▲ Short lead time ○ Made to order

- »h6 shank tools must be used.
- »Tool length can be adjusted up to 10mm.
- »T-wrench is must be ordered separately.
(GRIP torque wrench is recommended.)
- »If you use the ZERO-FIT function, you cannot use the hydro-sleeve.
- »All products center through coolant system.
- »Additional sizes and special designs available on request.

⚠ The minimum tool depth must be observed.



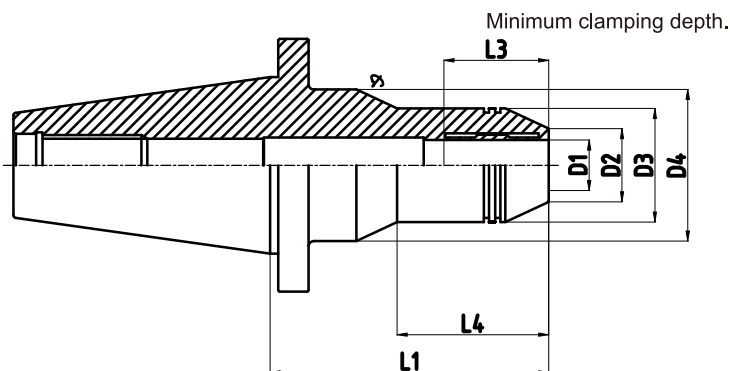
Tool Grinding and Sharpening.
Inch size

Dimensions(inch)

VBT		D1	D2	D3	D4	L1	L2	L3	L4	Clamping wrench	Adjustment bolt (wrench)	Kg.
VBT50/GR075/0433	●	0.750	1.142	1.890	2.362	4.331	-	1.673	2.362	TR-5.0	-	3.8
VBT50/GR125/0433	●	1.250	1.654	2.165	2.756	4.331	-	2.165	2.362	TR-5.0	-	4.0

Availability: ● Stock ▲ Short lead time ○ Made to order

- »h6 shank tools must be used.
- »Deep insertion depth.
- »T-wrench is must be ordered separately.
(GRIP torque wrench is recommended.)
- »Additional sizes and special designs available on request.



VBT50



New!!**New product line-up**

= Dimensions(inch)

FL90 -inch		D1	D2	D3	D4	L1	L2	L3	L4	Clamping wrench	Adjustment bolt (wrench)	Kg.
FL90/GR075/0283	●	0.750	1.614	2.126	3.543	2.835	2.067	1.673	1.732	TR-5.0	-	1.8
FL90/GR125/0322	●	1.250	2.067	2.126	3.543	3.228	2.559	2.165	2.126	TR-5.0	-	1.7

= Dimensions(mm)

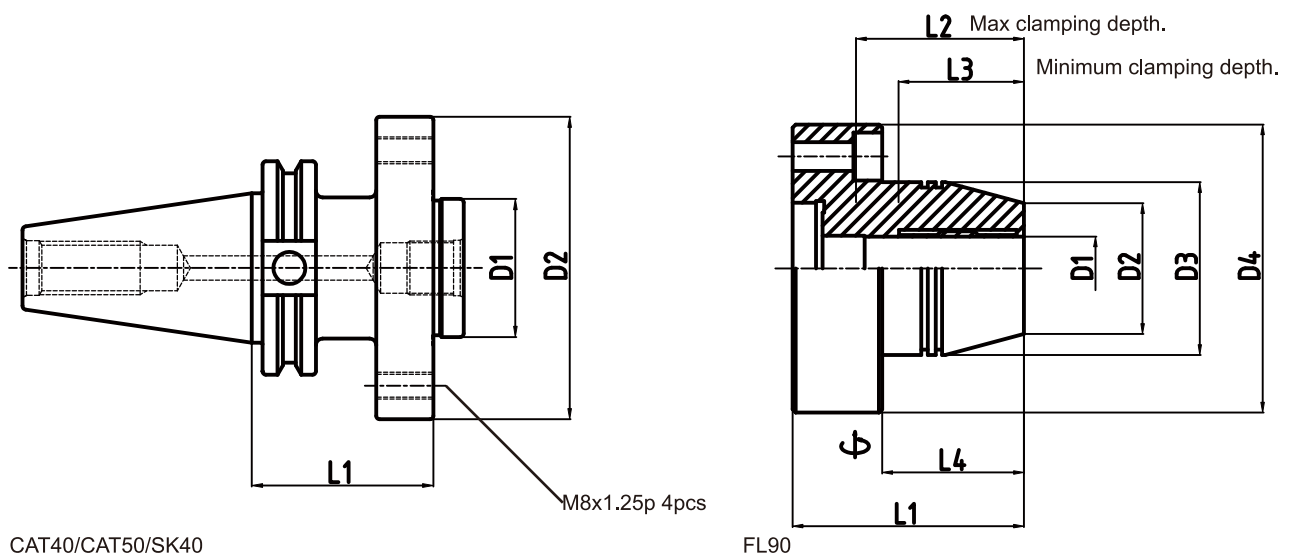
FL90 -mm		D1	D2	D3	D4	L1	L2	L3	L4	Clamping wrench	Adjustment bolt (wrench)	Kg.
FL90/GR20/72	●	20	41	54	90	72	52.5	42.5	44	TR-5.0	-	1.8
FL90/GR32/85	●	32	52.5	54	90	82	65	55	54	TR-5.0	-	1.7

ADAPTER

CAT40-ADAPTER	●	41.06	90	-	-	54	-	-	-	-	M16x1.0(T-6.0)	2.0
CAT50-ADAPTER	●	41.06	90	-	-	56	-	31	-	-	M16x1.0(T-6.0)	4.0
SK50-ADAPTER	●	41.06	90	-	-	56	-	38	-	-	M16x1.0(T-6.0)	4.0

Availability: ● Stock ▲ Short lead time ○ Made to order

- »h6 shank tools must be used.
- »Deep insertion depth.
- »T-wrench is must be ordered separately.
(GRIP torque wrench is recommended.)
- »Additional sizes and special designs available on request.



Hydro-sleeve

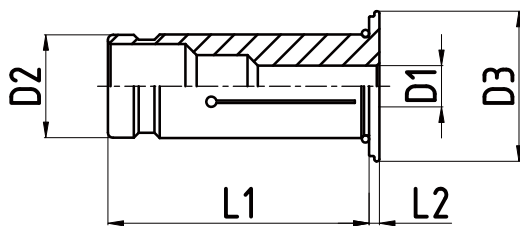
Inch-Inch = Dimensions(inch)

OD050	D1	D2	D3	L1	L2	Kg.
OD050-1/8	1/8	0.050	0.492	1.397	0.078	0.1
OD050-3/16	3/16	0.050	0.492	1.397	0.078	0.1
OD050-1/4	1/4	0.050	0.492	1.397	0.078	0.1
OD050-5/16	5/16	0.050	0.492	1.397	0.078	0.1
OD050-3/8	3/8	0.050	0.492	1.397	0.078	0.1

Inch-mm

OD050	D1	D2	D3	L1	L2	Kg.
OD050-3	2	0.050	0.492	1.397	0.078	0.1
OD050-4	3	0.050	0.492	1.397	0.078	0.1
OD050-6	4	0.050	0.492	1.397	0.078	0.1
OD050-8	5	0.050	0.492	1.397	0.078	0.1
OD050-10	6	0.050	0.492	1.397	0.078	0.1

- »All shank tools must be used.
- »Internal Coolant type Run-out 3xd 3Micron all items.
- »Additional sizes and special designs available on request.
- »Applied when using oil hole type tools.
- »Recommended for use in precise work.
- »All types of shank can be used.(Stright, Flat, Whistle notch)



OD050/OD075/OD125

Inch-Inch = Dimensions(inch)

OD075	D1	D2	D3	L1	L2	Kg.
OD075-1/8	1/8	0.050	0.492	1.397	0.078	0.1
OD075-3/16	3/16	0.050	0.492	1.397	0.078	0.1
OD075-1/4	1/4	0.050	0.492	1.397	0.078	0.1
OD075-5/16	5/16	0.050	0.492	1.397	0.078	0.1
OD075-3/8	3/8	0.050	0.492	1.397	0.078	0.1
OD075-1/2	1/2	0.050	0.492	1.397	0.078	0.1
OD075-5/8	5/8	0.050	0.492	1.397	0.078	0.1

Inch-mm

OD075	D1	D2	D3	L1	L2	Kg.
OD075-3	3	0.050	0.492	1.397	0.078	0.1
OD075-4	4	0.050	0.492	1.397	0.078	0.1
OD075-6	6	0.050	0.492	1.397	0.078	0.1
OD075-8	8	0.050	0.492	1.397	0.078	0.1
OD075-10	10	0.050	0.492	1.397	0.078	0.1
OD075-12	12	0.050	0.492	1.397	0.078	0.1
OD075-14	14	0.050	0.492	1.397	0.078	0.1
OD075-16	16	0.050	0.492	1.397	0.078	0.1



Coolant type

HYDRO-ACCESSORIES

Hydro-sleeve

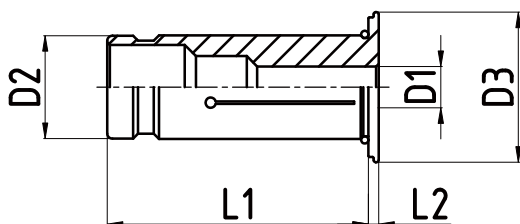
Inch-Inch = Dimensions(inch)

OD125	D1	D2	D3	L1	L2	Kg.
OD125-1/4	1/4	1.250	1.063	1.988	0.078	0.2
OD125-3/8	3/8	1.250	1.063	1.988	0.078	0.2
OD125-1/2	1/2	1.250	1.063	1.988	0.078	0.2
OD125-5/8	5/8	1.250	1.063	1.988	0.078	0.2
OD125-3/4	3/4	1.250	1.063	1.988	0.078	0.2
OD125-7/8	7/8	1.250	1.063	1.988	0.078	0.2
OD125-1"	1"	1.250	1.063	1.988	0.078	0.2

Inch-mm = Dimensions(inch)

OD125	D1	D2	D3	L1	L2	Kg.
OD125-6	6	1.250	1.063	1.988	0.078	0.2
OD125-8	8	1.250	1.063	1.988	0.078	0.2
OD125-10	10	1.250	1.063	1.988	0.078	0.2
OD125-12	12	1.250	1.063	1.988	0.078	0.2
OD125-14	14	1.250	1.063	1.988	0.078	0.2
OD125-16	16	1.250	1.063	1.988	0.078	0.2
OD125-18	18	1.250	1.063	1.988	0.078	0.2
OD125-20	20	1.250	1.063	1.988	0.078	0.2
OD125-25	25	1.250	1.063	1.988	0.078	0.2

- »All shank tools must be used.
- »Internal Coolant type Run-out 3xd 3Micron all items.
- »Additional sizes and special designs available on request.
- »Applied when using oil hole type tools.
- »Recommended for use in precise work.
- »All types of shank can be used.(Stright, Flat, Whistle notch)



OD050/OD075/OD125



Coolant type

Torque T-wrench (5.5Nm)



TR		Applied product
TR-4.0	4mm	ID 6/8/10/12/14/16/18
TR-5.0	5mm	ID 20/25/32

- »5.5Nm torque.
- »Extended hydraulic piston and parts life.
- »Capable of clamping with constant force.

Coolant Tube

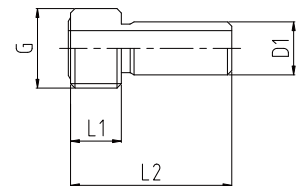
Coolant Tube is for optimum internal supply of HSK holder. It prevents spindle from being spoiled and rests the sealing system.

≡ Dimensions(mm)



CT	For		D1	L1	L2	G
CT40	HSK32	●	8.0	7.5	29.0	M12x1
CT50	HSK40	●	10.0	9.5	33.0	M16x1
CT63	HSK63	●	12.0	11.5	36.5	M18x1
CT100	HSK100	●	16.0	15.0	43.5	M24x1.5

Availability: ● Stock ▲ Short lead time ○ Made to order



Coolant Tube

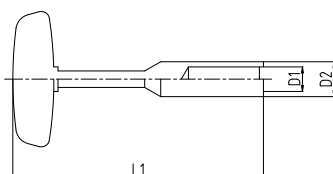
Coolant Tube Wrench

≡ Dimensions(mm)



CTR	For		D1	D2	L1
CTR40	HSK32	●	8.0	11.0	111.0
CTR50	HSK40	●	10.0	15.0	120.0
CTR63	HSK63	●	12.0	17.0	122.0
CTR100	HSK100	●	16.0	22.0	141.0

Availability: ● Stock ▲ Short lead time ○ Made to order



Coolant Tube Wrench



GRIP Head office (Jinsung Eurotec co., ltd.)

#B-1706, 101, Gasan digital 2-ro, Geumcheon-gu, Seoul, Republic of Korea.

GRIP Factory

#B101-201 397 Seckcheon-ro Buchun-si Gyeonggi-do Republic of Korea.

Tel.+82 32 624 0907~8

Fax.+82 32 624 0909

gripperperfect@gmail.com

www.gripkorea.com